

# SECURITY CHECK PAINT MARKER

Screw security paint



**RIGHT  
FOR  
THE  
JOB.**

*Markal*

Markal.com

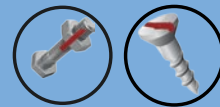


Security Check Paint Marker provides a convenient visual method for identification of vibratory loosening or tampering in nuts, bolts, fasteners, and assemblies. High visibility paint mark becomes a hard film that breaks easily. Ideal for quality control and warranty work. Safe on most surfaces, adheres perfectly to metal. Safe for the user, doesn't contain Xylene.

- High visibility paint for a fast and easy visual check: security indicator or tamper-evident seal on assemblies facilitating detection of any accidental or malicious adjustment movement
- Paint free of heavy metals for a safe use on metal and for the user
- Effective volume superior compared with other product on the market (50 ml paint) for a longer period of use and reduced work downtime
- Marking range: 20°C to 70°C (-4°F to 158°F)
- Mark temperature resistance: 200°C (392°F)

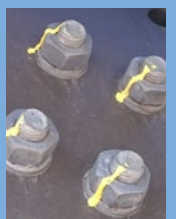
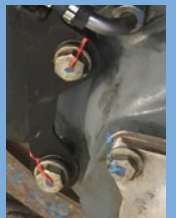
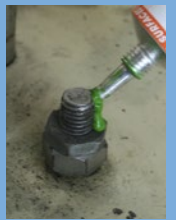
#### Industry Uses:

- Industrial manufacturing



#### Surfaces uses:

- Steel and iron
- Stainless steel
- Aluminum
- Plastic
- Rusty metal
- Concrete and stone
- Asphalt
- Masonry
- Rubber and tires
- Cloth and fabric (textiles)
- Pipes and tubes
- Plates
- Alloy and superalloy metals
- Non-ferrous metals



#### Details:

- |         |         |         |         |
|---------|---------|---------|---------|
| ■ 96668 | ■ 96669 | ■ 96670 | ■ 96671 |
| ■ 96672 | ■ 96673 | ■ 96674 | ■ 96675 |



LA-CO Industries Inc.  
1201 Pratt Boulevard  
Elk Grove Village, IL 60007-5746 USA  
(1) 800.621.4025  
(1) 847.956.7600  
Customer\_Service@laco.com  
LP95R00005EN

LA-CO Industries Europe S.A.S.  
ALLEE DES COMBES  
PI DE LA PLAINE DE L'AIN  
01150 BLYES  
France  
Tel: +33 (0)4 74 46 23 23  
info@eu.laco.com

